

Can Development Heal?

Integrative Design & Regenerative Development of Neighborhoods and Places



John Boecker, AIA, Hon. FIGP

www.regenerativecommunities.com
www.sevengroup.com

What is Integrative Design?

- . . . the intelligent integration of technology with nature
- . . . but for what purpose?



Why Integrative Design?

What are the primary environmental imperatives we currently face?

- Potable Water
- Climate Change
- Resource Destruction
- Habitat Health
- Pollution/Toxins



Why Integrative Design? . . . begin with definitions

Integrate:

to make into a whole by bringing all parts together; unify

Whole:

containing all components;
complete; not injured



Heal:

to make whole*

Are we healing?

Are we wholing?

** from the Proto-Germanic *khailaz*, meaning “to make whole,” which is the source of the Old English *haelan*, meaning “make whole, sound, and well.”

FIRST AMERICAN TITLE

KJ-97

Holiday Inn SELECT

DOUBLE TREE HOTEL

THE Pavilions NORTH

Sam Able

FRIDAYS

Chick-fil-A

BEST BUY

SPORTS AUTHORITY

Costco

Q101

Pe

San Pedro Crossing

CIRCUIT CITY

LINENS'N THINGS

MEN'S HOUSE

Barnes & Noble Booksellers











What is Integrative Design? . . . revisited

Addresses interrelationships between: . . . the four key subsystems

Earth

Habitat

Wind

Water

Fire

Energy

Water

Materials



Outcome:
the health of all systems

What is Integrative Design?

A process for discovering the mutually beneficial interrelationships between:

Habitat

Water

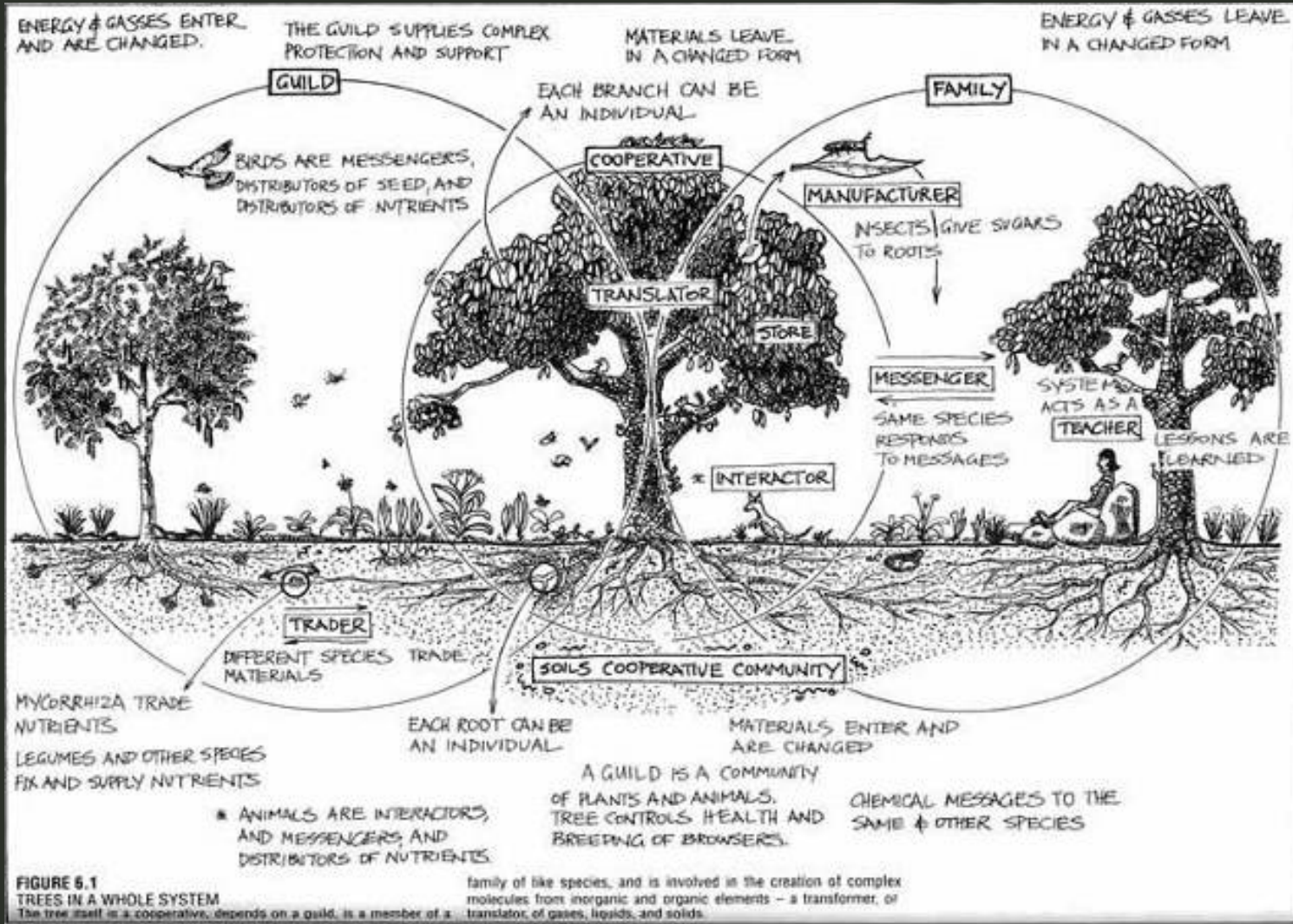
Energy

Materials



. . . for the purpose of participating in the health of the place

Natural Systems as Our Model for Interrelationships



From Permaculture Designers Manual, Bill Mollison

Natural Systems as Our Model



Image from Biohabitats, Inc.

Environmental Imperatives . . . One System

- Potable Water
- Climate Change
- Resource Destruction
- Habitat Health
- Pollution/Toxins



Natural Systems as Our Model ??



Before the Age of Specialization



Before the Age of Specialization



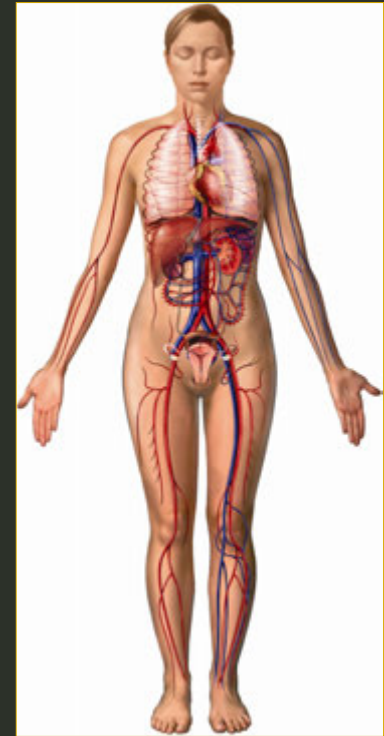
Before the Age of Specialization



Integrative Design: Neighborhood as an Organism

Systems Integration:

- Understanding relationships between systems
- Not a set of component parts
- Holistic, non-linear process
- Downsize or eliminate systems



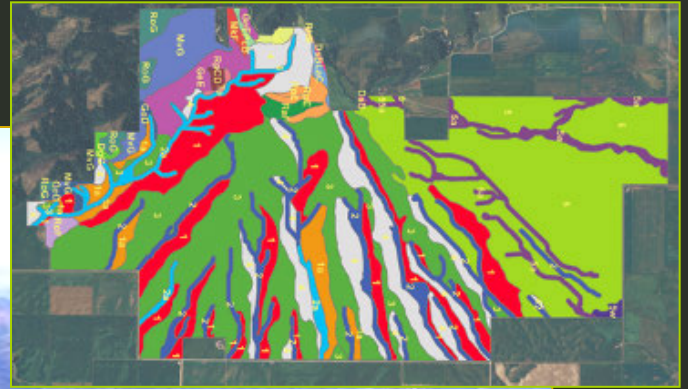
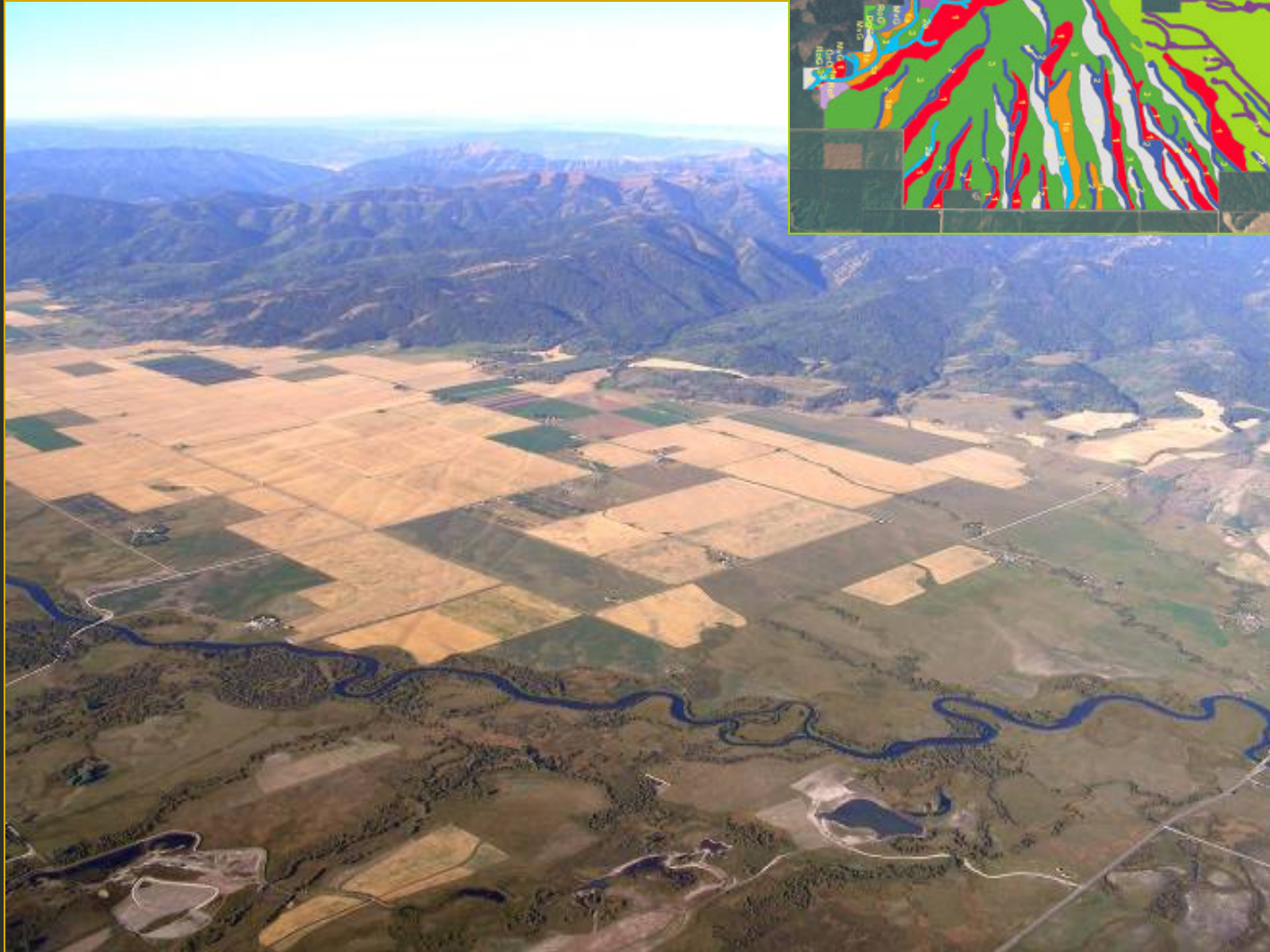
Place (or neighborhood):

A sophisticated dynamic system

An organism -

formed by energy flows
and nutrient exchanges
between all entities

Understanding Patterns of Place



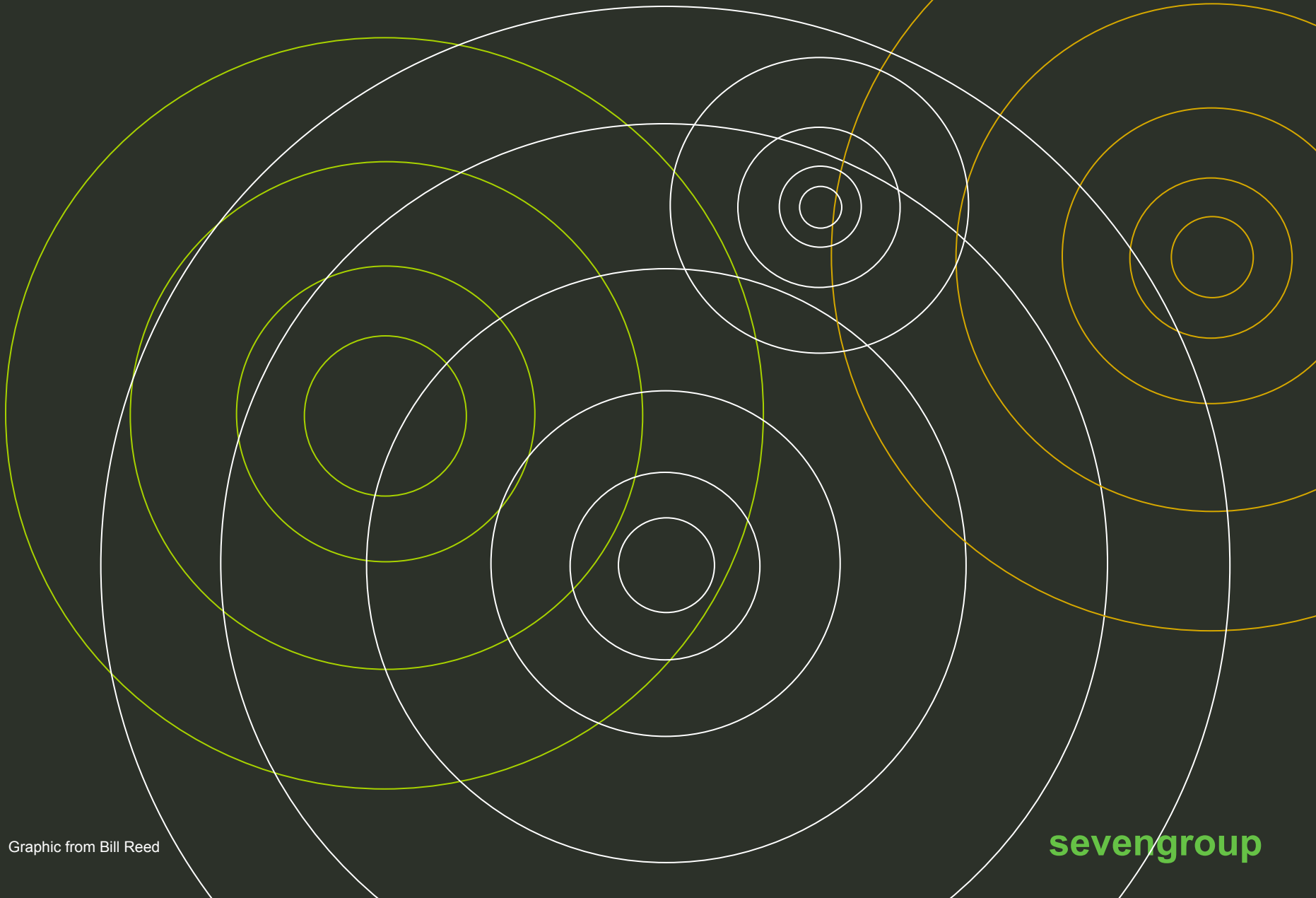
A EF HI KLMN T VWXYZ
BCD G J OPQRS U

Understanding Patterns of Place



Images from Bill Reed

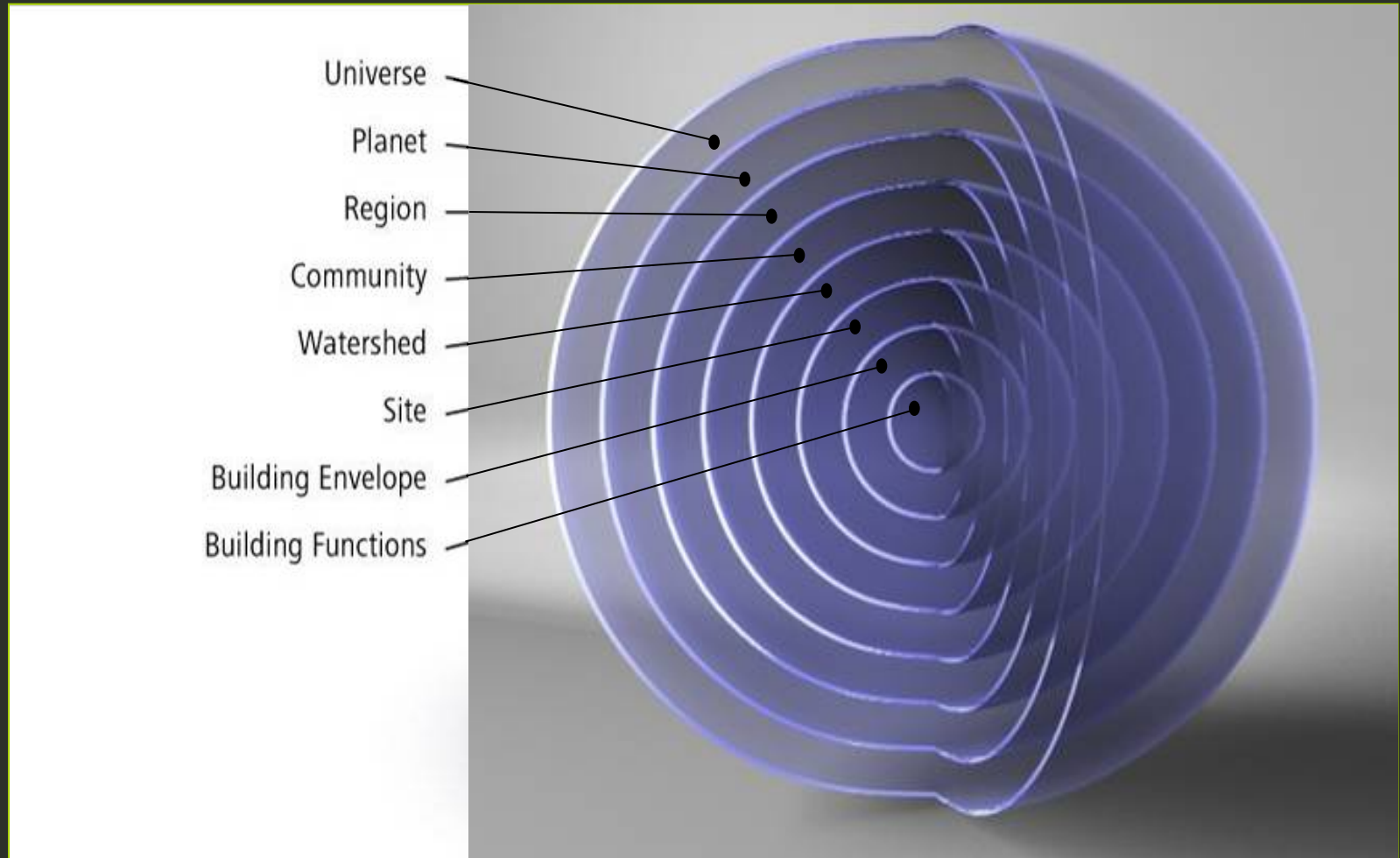
Place - Nested Systems



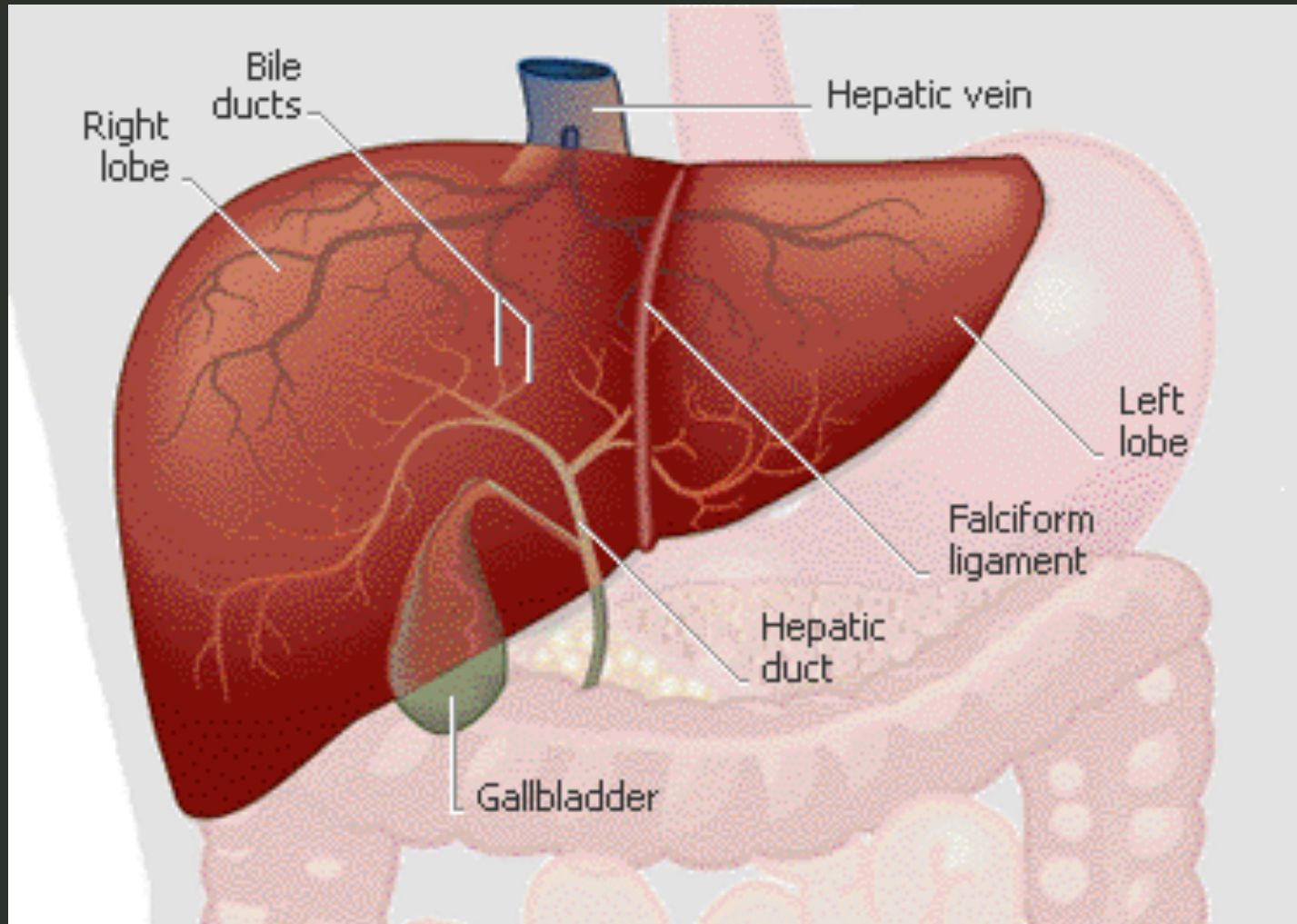
Graphic from Bill Reed

sevengroup

Nested Systems



A High Performance Liver?



What is Development?

“The act of bringing out the capabilities or possibilities of something to a more advanced or effective state.”

- Oxford English Dictionary

Outcome:

Creating new potential
for the health of the place