

Regional Plan Association • The NJ Highlands Council

NJ Highlands

regen

regenerative
design
conference

Design strategies to restore
degraded landscapes,
revive local economies and
create better places.

6.18.2010

The Morristown-Beard School
70 Whippany Rd
Morristown, NJ 07960

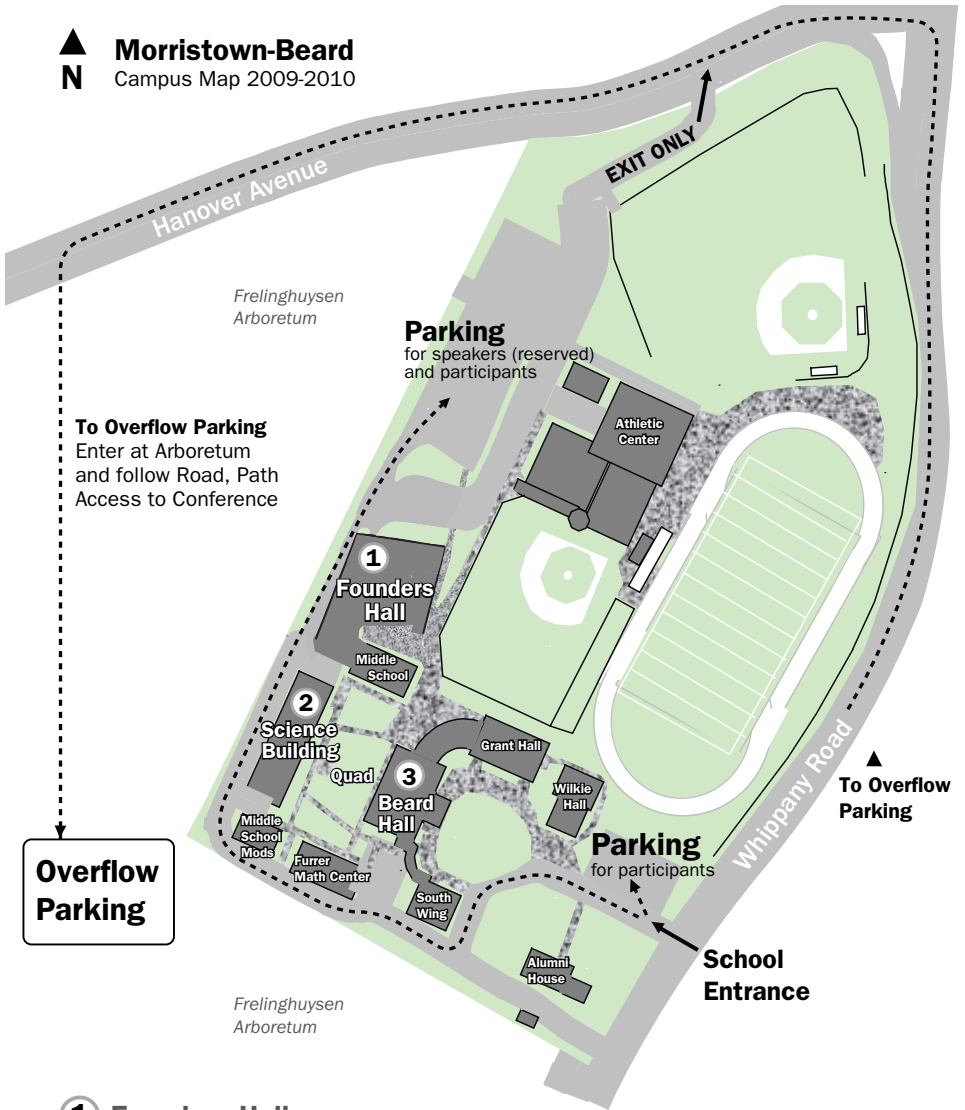
rpa.org/regen

Brought to you by:
Geraldine R. Dodge Foundation • The Leon Lowenstein Foundation • NJ Office of Smart Growth



Morristown-Beard

Campus Map 2009-2010



Overflow Parking

1 Founders Hall

Lobby (*Registration & Coffee, Exhibits*)

Founders Hall Auditorium (Morning Program, Afternoon Sessions: Centers/Buildings, Integrated Infrastructure)

Second Floor Theatre Atrium (*Highlands Visioning Session*)

Classrooms (Afternoon Sessions: *Living Surfaces, Municipal Civic Projects/Operations, Brownfields, Habitat, Performance & Rating Systems*)

2 Science Building

Dining Room (*Lunch*)

Board Room (Afternoon Session: *Funding Regeneration*)

3 Beard Hall

Chapel Room (Afternoon Sessions: *Stormwater, Edges*)

Questions for the day:

- How does regenerative design advance traditional notions of sustainable development?
- How can regenerative design meet or exceed the environmental mandates required by the Highlands rules and the Highlands Regional Master Plan?
- What successful regenerative strategies, methods, techniques, technologies and models are currently available?
- How can we recognize a regenerative project design or proposal?
- How can regenerative design in practice inform future policy decisions?

Organized By: Regional Plan Association, with support from the New Jersey Highlands Council.

Sponsored By: The Geraldine R. Dodge Foundation, the Leon Lowenstein Foundation, the F.M. Kirby Foundation, the NJ Office of Smart Growth, AIA – NJ Chapter, and the NJ Chapter of the USGBC.

A sustainable and locally focused lunch menu will be generously supported and prepared by the restaurant Farm2Bistro located in Nutley, NJ. Executive Chef and Founder, Michael Madigan, will be on hand to discuss his commitment to sustainable farm-to-table practices.

Freshly roasted coffee compliments of Red House Roasters.

Conference Video by Scott Kesselman and 1023 Productions.

Thanks to Julie Bargmann's studio class for their presentation board display, and to S.W.I.M. Coalition for sharing their Mind in the Gutter exhibit for the day.

Registration & Coffee

7:30 – 8:00 AM, Lobby and Entrance of Founders Hall

Light fare provided by Farm2Bistro

Vendor Exhibit

7:30 AM – 3:30 PM, Lobby and Hallway of Founders Hall

Morning Program

Introductions

8:00 – 8:15 AM, Founders Hall Auditorium

Carlos Rodrigues, Vice President and NJ Director, Regional Plan Association
Christopher Daggett, President and CEO, The Geraldine R. Dodge Foundation
Tom Borden, Deputy Executive Director, Chief Counsel, NJ Highlands Council

Opening Keynote

8:15 - 9:15 AM, Founders Hall Auditorium

Living System Design - Integrating and Regenerating the Health of our Social and Ecological Systems

Bill Reed, President, Regenesis Group, Santa Fe, NM

Corridor / Region

9:15 - 10:00 AM, Founders Hall Auditorium

This session will showcase projects which take innovative regional approaches to land use, in some cases engaging transit and hydrologic corridors. The effects are functionally and qualitatively restorative and integrative, bringing together human activity and living systems to improve water quality, public amenity, community and economic productivity.

Mami Hara, Principal, ASLA, AICP, Wallace Roberts and Todd, Philadelphia, PA

Denise Hoffman Brandt, Principal, Denise Hoffman Brandt Landscape Design, NY, NY

Thomas Woltz, Principal, Nelson Byrd Woltz, New York, NY

Block / Neighborhood

10:00 - 10:45 AM, Founders Hall Auditorium

The neighborhood is sometimes described as the basic building unit of human society. This session will examine regenerative processes applied at

the block and neighborhood levels, including streetscape redesigns, reclaiming public spaces and reducing excessive impervious surfaces from streets.

John Boecker, AIA, Hon. FIGP, 7 Group , Kutztown, PA

Donna Walcavage, Principal, AECOM, New York, NY

Franco Montalto, PhD, President, eDesign Dynamics, New York, NY

Break

10:45 - 11:00 AM

Lot / Parcel

11:00 - 11:45 AM, *Founders Hall Auditorium*

Buildings and the land around them are part of larger systems. What strategies can we deploy to make buildings and individual parcels become more functional and productive components of a larger whole?

Peter Munoz, President, Natural Systems International, Santa Fe, NM

Mark Thomann, Director, Balmori Associates, New York, NY

Alex Felson, Professor, Yale Forestry & Env. Studies + School of Arch., and Former Director of Design, EDAW

Performance Metrics

11:45 AM– 12:00 PM, *Founders Hall Auditorium*

Measuring performance is critical to both documenting successes and to be able to take corrective actions to fix project shortfalls. What types of metrics should we be looking at and how should they be implemented?

Helle Bank Jorgensen, Partner, Sustainability Practice, PricewaterhouseCoopers, New York, NY

Morning Program Response

12:00-12:15 PM, *Founders Hall Auditorium*

The respondent will discuss the morning program in terms of the recently adopted NJ Highlands Regional Master Plan.

Dan Van Abs, PhD, PP/AICP, Senior Director of Planning and Science, NJ Highlands Council

Lunch

12:15 - 1:00 PM, *Science Building Dining Room and Quad*

Provided by Farm2Bistro

Afternoon Program

Highlands Visioning Session

1:00 -4:00 PM, *Founders Hall, Second Floor Theatre Atrium*

Highlands Council staff and design professionals will facilitate an inter-active roundtable discussion, focusing on redevelopment of an approximately 1,000 acre brownfields site in the Highlands Region.

Lead Facilitator: **Bill Reed**, President, Regenesys, Sante Fe, NM

Supporting Facilitators: **Maryjude Haddock-Weiler**, Planner, NJ Highlands Council; **Dan Van Abs**, PhD, PP/AICP, Senior Director of Planning and Science, NJ Highlands Council; **Carlos Rodrigues**, Vice President and NJ Director, Regional Plan Association; **Anton Nelessen**, Principal, A. Nelessen Associates, Inc.; **Ignacio Bunster-Ossa**, Principal, WRT; **Denise Hoffman Brandt**, Principal, Denise Hoffman Brandt Landscape Design; **Rebecca Hill**, Associate, Dland Studio; **Michael Fleishacker**, Principal, Quercus Studios; **Gerry Hazel**, LEED AP, Sustainable Design Collaborative LLC; **Sarah Neilson**, Planner in Community Affairs, NYC Department of Design and Construction. **Richard Cotton**, Principal, Asbury Farms

Centers/Buildings

1:00 - 2:25 PM, *Founders Hall Auditorium*

Regenerative interventions in established neighborhoods and communities.

Moderator: **J. Tedrowe Bonner**, Principal, RubiconSeven, Nesconset, NY

Steve Lederach, Principal, Arnold Associates, Princeton, NJ

Kevin Stack, President, USGBC Faculty, BaDT, Northeast Green Building Consulting, Syracuse, NY

Pamela Sams, Senior Associate, Sustainable Design Manager, HOK, Washington, D.C.

Jason Kliwinski, Dir. of Sustainable Design, USGBC Faculty, AIA NJ President, Spiegle Architectural Group

Stormwater

1:00 - 2:25 PM, *Beard Hall, Chapel Room*

Ways to approach stormwater management from a regenerative perspective.

Moderator: **Robert Pirani**, Vice President for Environmental Programs, Regional Plan Association, NY, NY

Dr. Stephen J. Souza, President, Princeton Hydro, Princeton, NJ

Duke Bitsko, Director of Interdisciplinary Design, Bioengineering Group, Salem, MA

Jill Desimini, Senior Associate, Stoss, Boston, MA

Keith Bowers, President, Biohabitats, Baltimore, MD

Living Surfaces

1:00 - 2:25 PM, *Founders Hall, Classroom LL014*

A practical and technical look at living rooftops as integrated systems and the ecosystem services they provide, including issues of maintenance and economics.

Charlie Miller, Founder, Principal, Roofscapes, Inc., Philadelphia, PA

Ed Snodgrass, President, Emory Knoll Farms, Street, MD

Municipal Civic Projects/Operations

1:00 - 2:25 PM, *Founders Hall, Classroom LL015*

Regenerative practices for public works directors and public facilities managers.

Mami Hara, Principal, ASLA, AICP, Wallace Roberts and Todd, Philadelphia, PA

Glen Abrams, Lead Planner, Philadelphia Water Department, Office of Watersheds, Philadelphia, PA

Brownfields

1:00 - 2:25 PM, *Founders Hall, Classroom LL016*

Addressing the specific regulatory and economic challenges posed by brownfield sites through project design.

Leah B. Yasenchak, Principal, Brownfield Redevelopment Solutions, Manasquan, NJ

Julie Bargmann, Founding Principal, Dirt Studio, Charlottesville, VA

Edges

2:30 - 4:00 PM, *Beard Hall, Chapel Room*

Opportunities presented at stream, river and lake edges: stabilization, habitat renewal, recreation and public access.

Moderator: **Kathy Hale**, Principal Watershed Protection Specialist, NJ Water Supply Authority

Kim Mathews, Principal, Mathews Nielsen Landscape Architects, New York, NY

Jim Eisenhardt, Wetland Scientist and Consultant

Lucinda R. Sanders, CEO and Partner, OLIN, Philadelphia, PA

Edward Samanns, Director of Environmental Sciences, The Louis Berger Group, Inc., Morristown, NJ

Integrated Infrastructure

2:30 – 4:00 PM, *Founders Hall Auditorium*

Smarter and more innovative ways to approach wastewater, water treatment and reuse.

Moderator: **Linda Pollak**, Principal, Marpillero Pollak Architects, NY, NY

Ed Clerico, CEO, PE, LEED AP, Alliance Environmental, LLC, New York, NY

Manisha Kaul, Associate, Andropogon Associates, Philadelphia, PA

Peter Munoz, President, Natural Systems International, Santa Fe, NM

Robert Rock, Associate, Michael Van Valkenburg Associates, New York, NY

Habitat

2:30 – 4:00 PM, *Founders Hall, Classroom LL014*

Habitat preservation, creation and enhancement in development projects and conversion opportunities, including within productive agricultural practices.

Thomas Woltz, Principal, Nelson Byrd Woltz, New York, NY

Jeff Keller, Ph.D., Principal, Habitat- by -Design, Pipersville, PA

Performance & Rating Systems

2:30 – 4:00 PM, *Founders Hall, Classroom LL015*

A more detailed discussion of opportunities inherent in performance and rating systems across various spatial scales, including LEED for Neighborhood Development and the soon to be launched Star Community Index.

Jeffery Raven, Principal, Sustainability + Urban Design, InfraPlan LLC.

Rob Wisniewski, Director of Sustainable Development, Lincoln Park Coast Cultural District, Newark NJ

Funding Regeneration

2:30 – 4:00 PM, *Science Building Board Room*

What are the options for funding regenerative development projects in a time of austerity?

Anthony Sblendorio, CEO and Cofounder, Ecological Group,; Master Planner for Willow School NY, NY

Conference Adjourns

4:00 PM

Tour of The Willow School

A Regenerative Design Project

4:45 – 6:00 PM

Participants should meet at the Willow School, near the Gladstone town center, at the corner of Highway 206 and Pottersville Road, approximately 25 minutes from the Morristown Beard School. Self-transport is required, carpooling encouraged.

Tour Leader: **Anthony Sblendorio**, CEO and Cofounder, Ecological Group; Master Planner for Willow School, New York, NY

For Additional Information Following the Conference

Regional Plan Association

179 Nassau Street, 3d floor, Princeton, NJ 08542

t. 609.228.7080

Christine Graziano, AICP/LEED AP, Consulting Planner

c. 917.734.5386

studio.cgm@gmail.com

A brief working definition* of regenerative design: a project or intervention which creates something that is both functional and aesthetically pleasing, but also meets the following criteria:

Inspiring - makes real contributions to a healthier place.

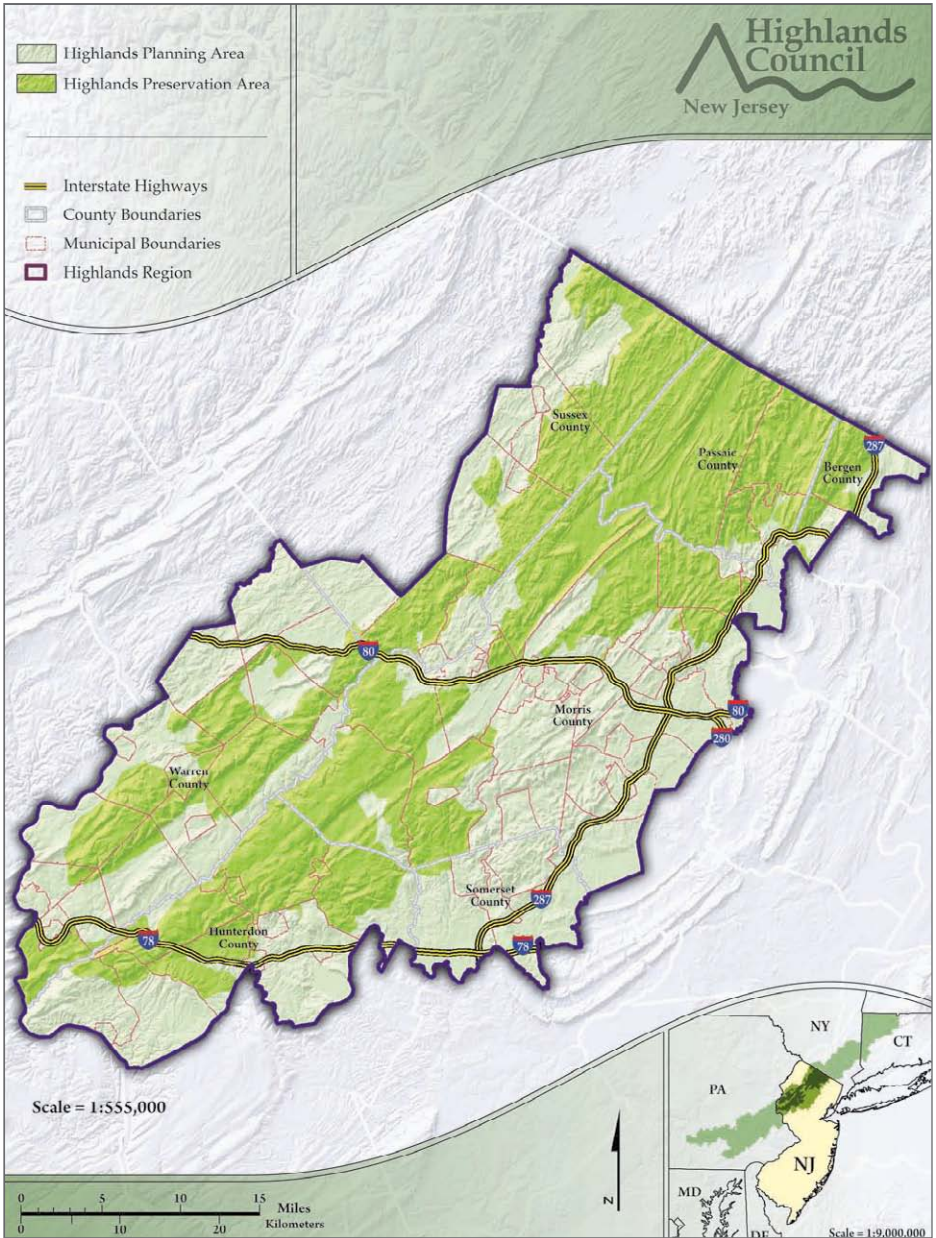
Authentic - arises from the essential qualities that make a place what it is.

Regenerative - uses natural intelligence to achieve results (including economic) through replacement or support of natural systems which optimize the presence of people in a landscape.

Paradigm shifting - proactive agent of change through incorporation of the regeneration of living systems (cultural, economic, natural), thereby raising the bar and helping to shift an entire industry in a new direction

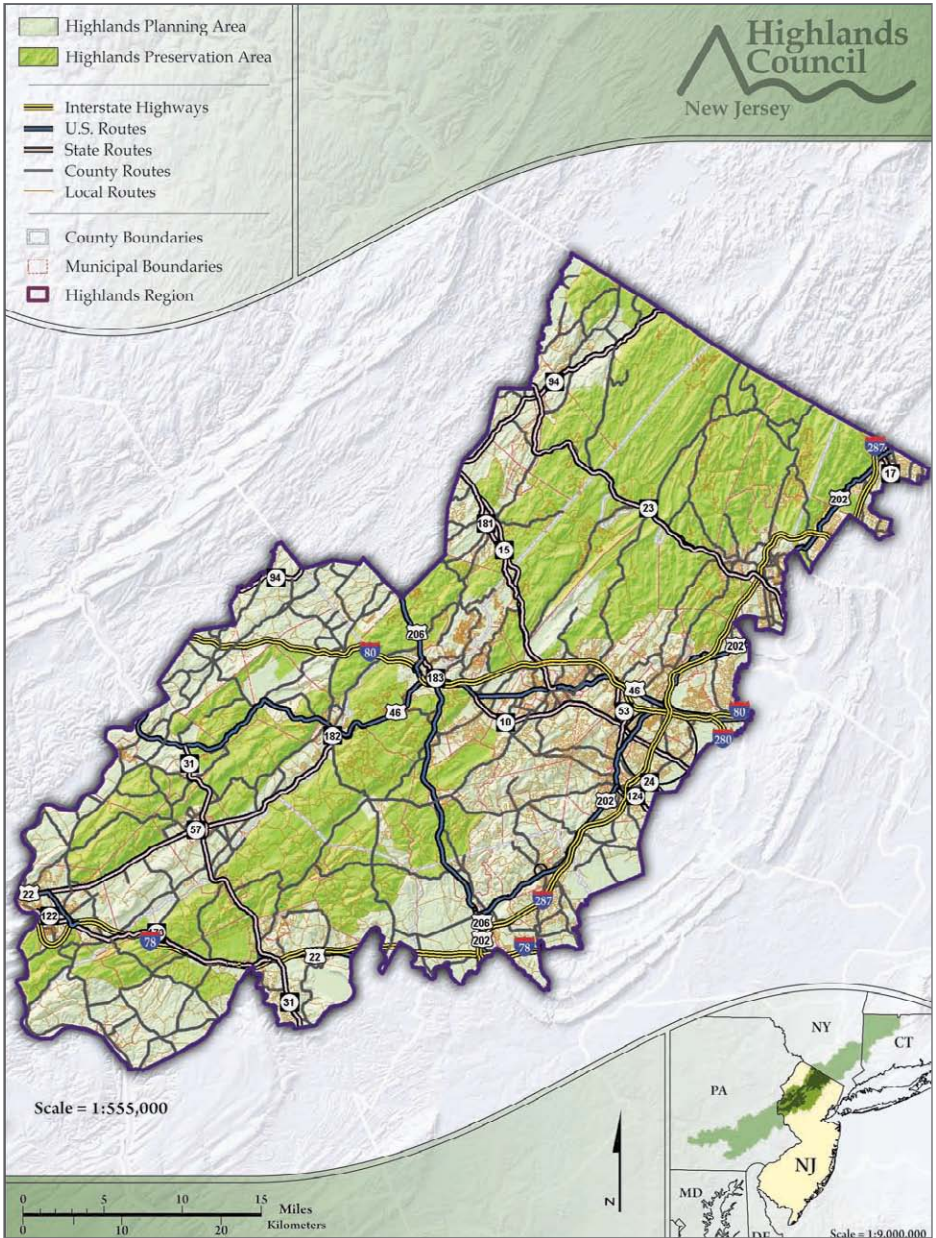
*as suggested by Pamela Mang, Regenesis Group

Highlands Region



From the 2008 Highlands Regional Masterplan

Roadway Network



From the 2008 Highlands Regional Masterplan



F. M. Kirby Foundation

Leon Lowenstein Foundation



www.rpa.org/regen