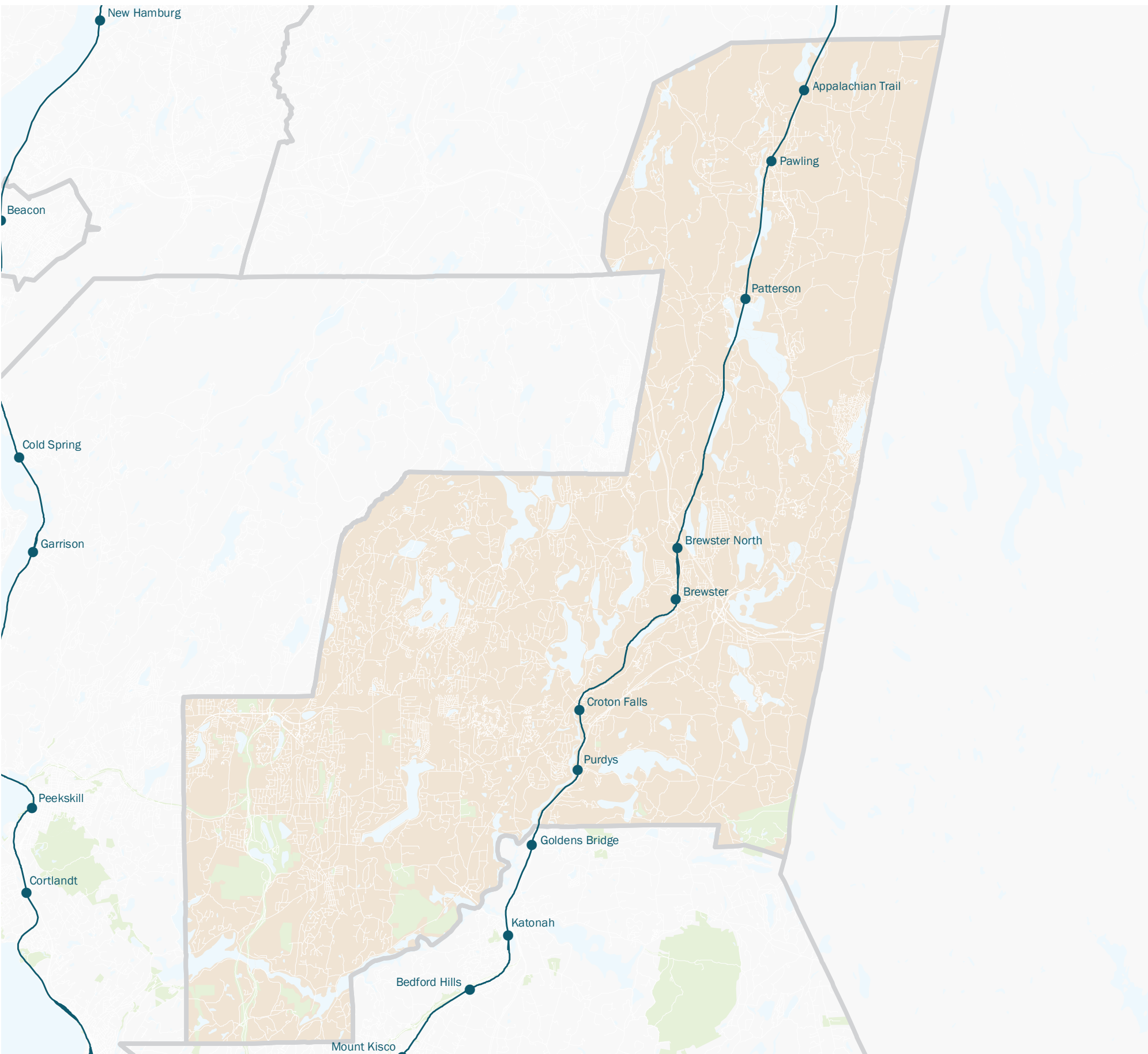


# Service cuts in Assembly District 99, Greg Ball

This map shows bus, subway and commuter rail service reductions from the MTA 2009 Final Proposed Budget, November 2008.



## Metro-North Railroad

### Eliminations East of Hudson

- Hudson line: 3 trains eliminated
- System-wide, over 2,000 customers will experience a reduction in train frequency from 30 to 75 minutes; approximately 3,500 customers will experience an increase of travel time up to 19 minutes.

### Other

Retiring 30M1 cars, causing less frequent service and more crowded rides; eliminates option of extra cars for emergencies.

## Metro-North Railroad

● Station with reduced service

