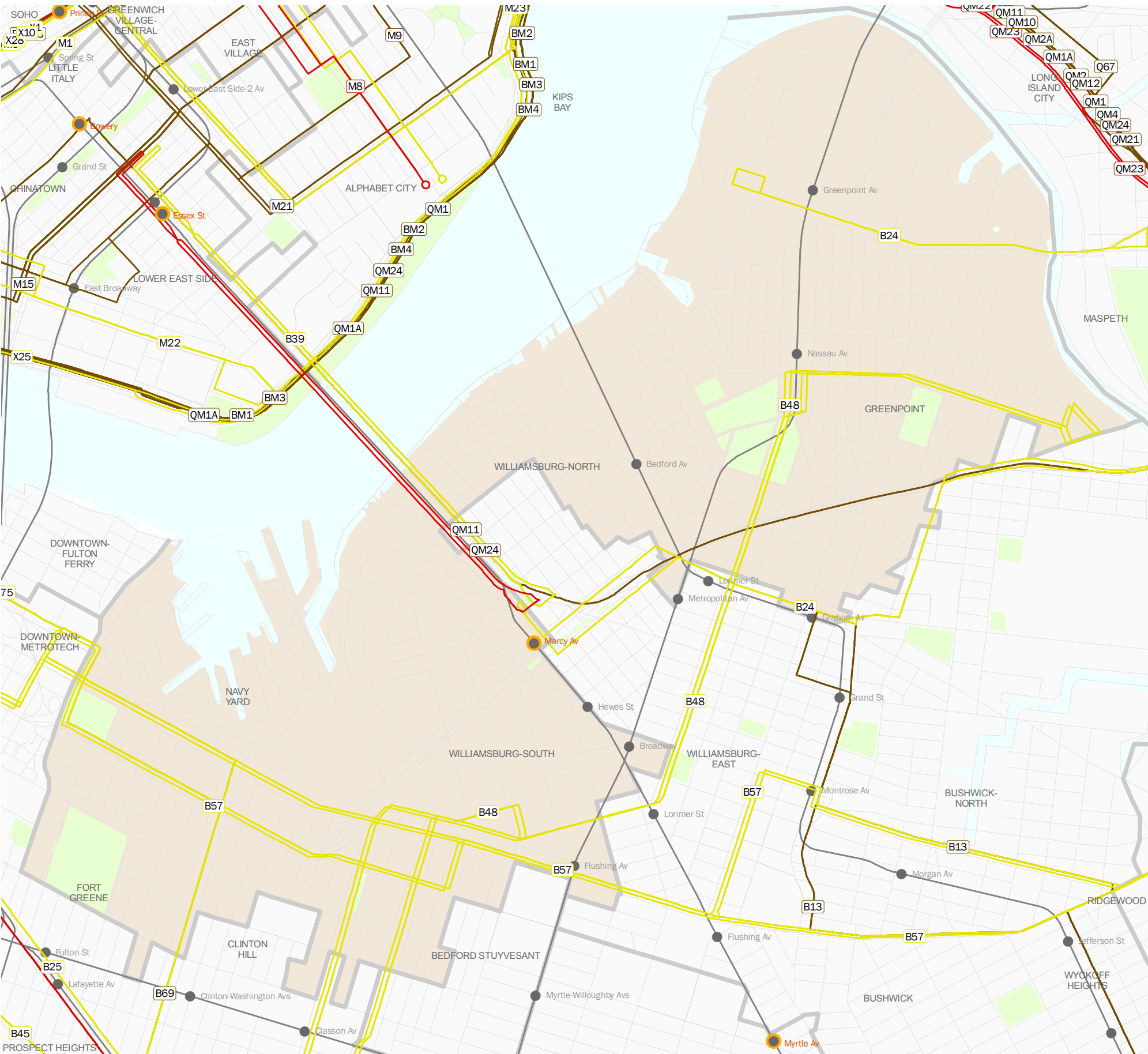


# Service reductions in Assembly District 50, Joseph Lentol

This map shows bus, subway and commuter rail service reductions from the MTA 2009 Final Proposed Budget, November 2008.



## Subways

### Eliminated lines

Z

### Eliminated Subway Service

- G service eliminated at stations past Court Square.
- Some rush hour J trains terminate at Chambers Street.
- M Service eliminated between Broad Street and Bay Parkway in Brooklyn.

### Loading guidelines increased to 125%, causing 1-2 minutes of increased wait time

- Midday only: L

### Weekend headways increased from 8 to 10 minutes

G, J, L, M

### Late night (2:00am-5:00am) headways increased to 30 minutes

G, J, L, M

## Buses

### Eliminated Bus lines

B39

### Weekend service eliminated

B24, B48, B57, B69

### Late Night service eliminated

B48, B57

### Other

B13 service ends at 11:30 P.M. on weekdays; some stops eliminated.  
 B69 weekday service reduced to 7:10am-11:15pm.  
 QM11, QM24 restructured; some stops eliminated and / or route altered.

## Subway

- Station with reduced service
- Station with eliminated service

## Bus

- Service eliminated
- Service reduced
- Service restructured

