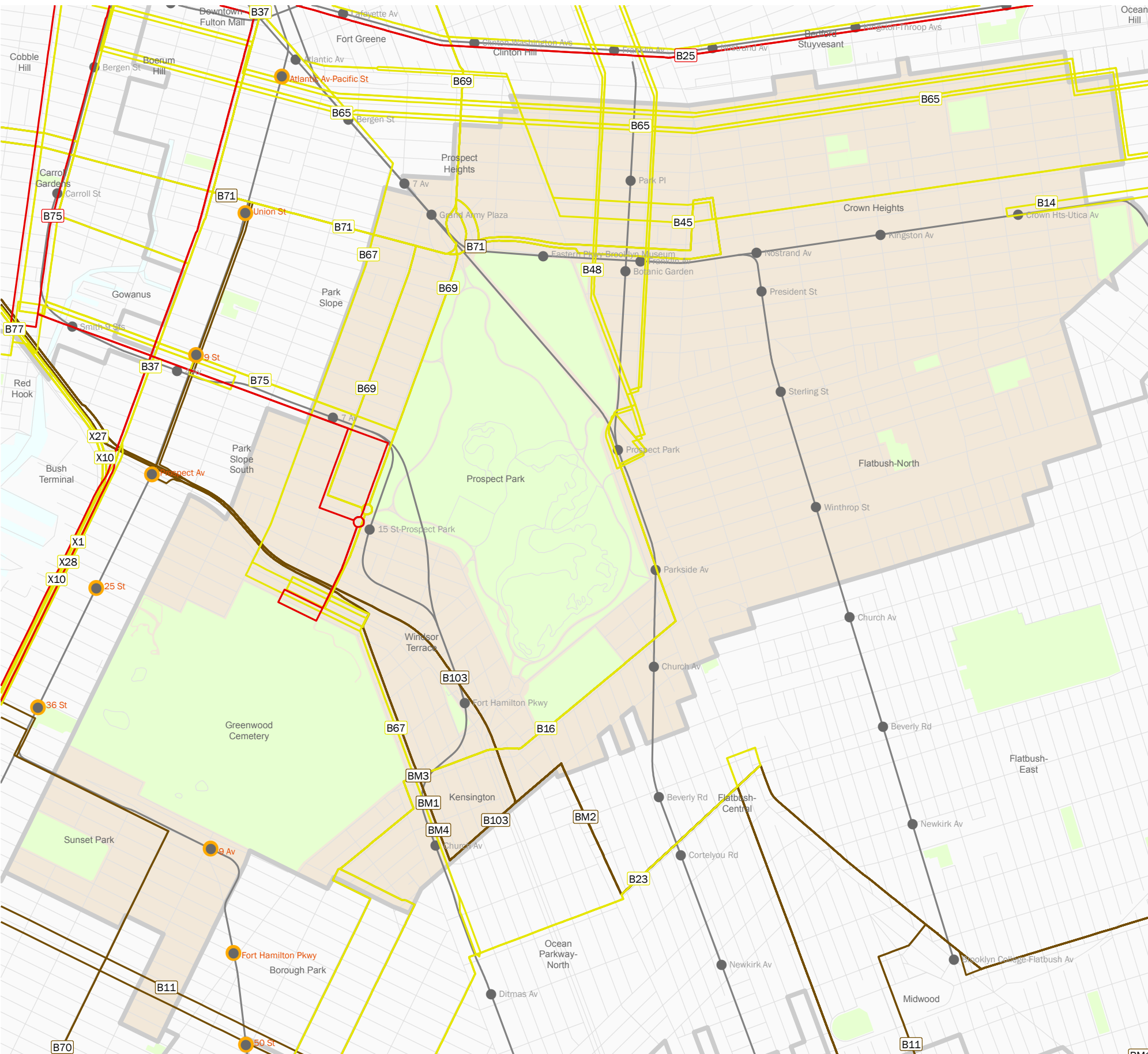


Service reductions in Senate District 20, Eric Adams

This map shows bus, subway and commuter rail service reductions from the MTA 2009 Final Proposed Budget, November 2008.



Subways

Eliminated subway service

- M Service eliminated between Broad Street and Bay Parkway in Brooklyn

Loading guidelines increased to 125%, causing 1-2 minutes of increased wait time

- Evening Only: 4, 5, B, Q

Weekend headways increased from 8 to 10 minutes

D, E, F, M, Q

Late night (2:00am-5:00am) headways increased to 30 minutes

4, 5, D, F, M, Q

Buses

Eliminated bus lines

B75

Weekend service eliminated

B16, B48, B69, B71

Late Night service eliminated

B14, B45, B48, B65, B87

Restructured; some stops eliminated and/or route altered

BM1, BM2, BM3, BM4, B103

Other

- B16 service reduced to 6 A.M. -11:30 P.M. on weekdays.
- B69 weekday service reduced to 7:10am-11:15pm.
- B71 weekday service begins at 7:25 A.M.
- B70 weekday service begins at 6:30 A.M.
- B11 service will end at 11:30pm on weekdays.

Subway

- Station with reduced service
- Station with eliminated service

Bus

- Service eliminated
- Service reduced
- Service restructured

